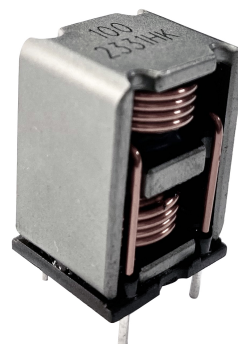


■HPD1623 Series

Features 特点

- Space reduction is realized by 2 in 1 construction.
二合一结构缩小空间
- The optimal design realizes high quality sound and low distortion.
高音质、低失真最佳设计
- Small compact, and DIP type.
小体积，直插类型
- Low radiation noise by magnetically shielded construction
闭合磁路封装，低辐射
- High current, Low resistance.
大电流，低电阻
- Operating temperature : -40°C~+125°C.
工作温度：-40°C~+125°C



Applications 应用

- Suitable as choke for digital amp. Car audio, LCD and PDP TV, 5.1ch Home theater, etc.
适用于数字功放扼流。如汽车音响，LCD 电视和 PDP 电视，5.1 声道家庭影院等

Electrical characteristics 电气特性

Part number 料号	Inductance 电感量 μH ± 20%	DCR 直流电阻 mΩ		SRF MHz typical	Isat 直流饱和电流 A typical			I _{rms} 温升电流 A typical	
		Typ	Max.		10% drop	20% drop	30% drop	20°C rise	40°C rise
HPD1623-100MB	10	9.0	11	13	12	14.4	15	4.3	6.5
HPD1623-150MB	15	17.6	20	10	9.2	11.0	13	3.9	5.8
HPD1623-220MB	22	22.7	28	6	9.0	10.5	12	3.1	4.2

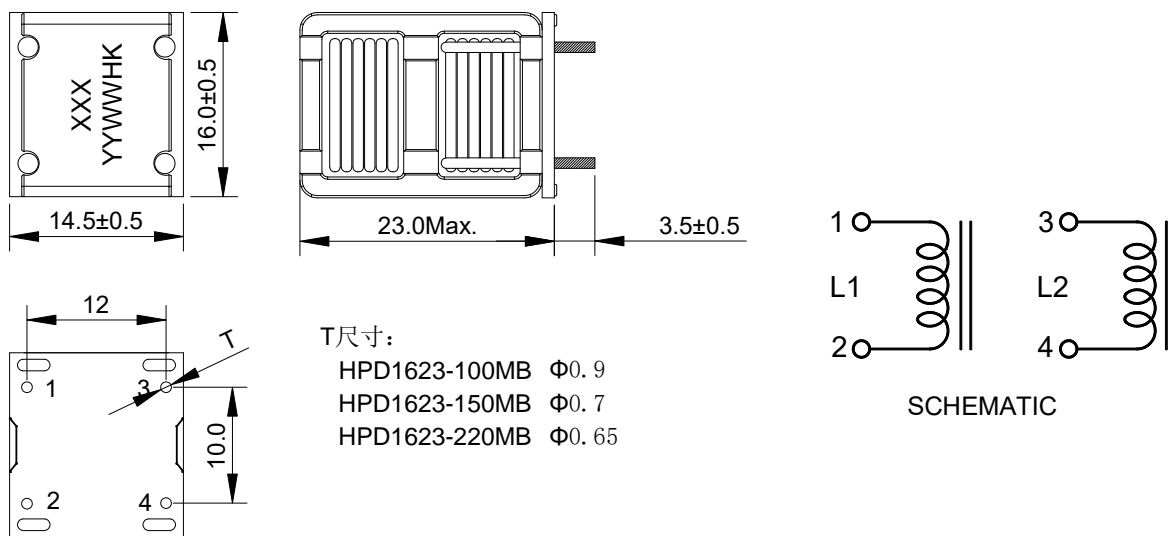
Remark

- ① Inductance is measured with a LCR meter Agilent 4284A or equivalent.
Test frequency at 100kHz
- ② DC resistance is measured with Keithley 580 Milliohm Meter, or equivalent.
Reference ambient temperature 25°C
- ③ SRF measured using an Agilent 4395A network analyzer and an Agilent 16193A test fixture.
- ④ DC current at 25°C that causes the specified Inductance drop from its value without current.
- ⑤ Current that causes the specified temperature rise from 25°C ambient. This information is for reference only and does not represent absolute maximum ratings.
- ⑥ Electrical specifications at 25°C

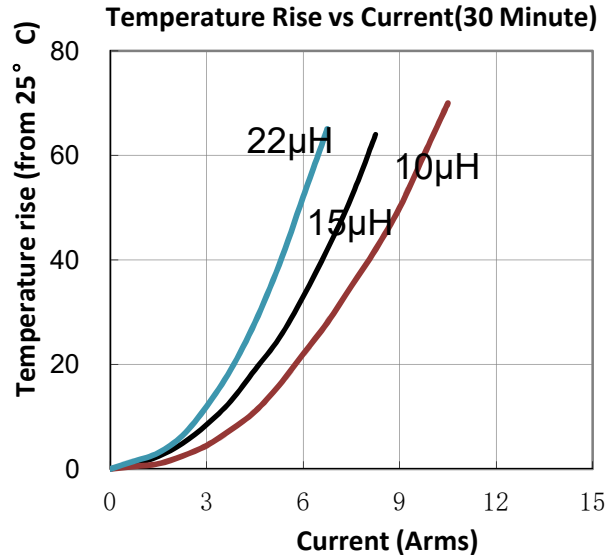
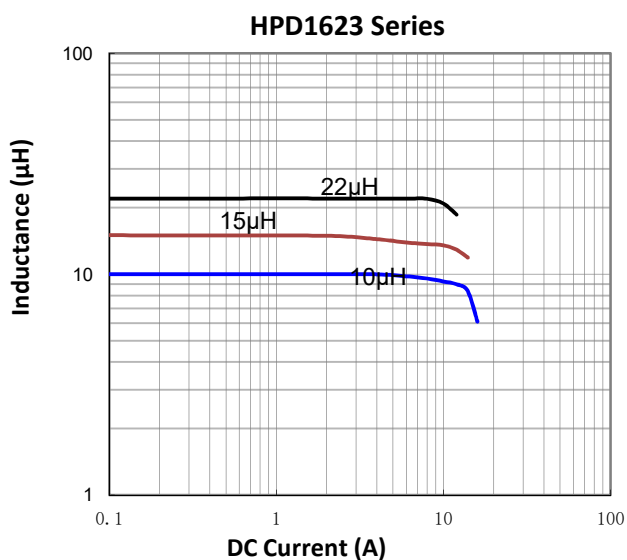
备注

- ① 电感量测试采用 Agilent 4284A 数字电桥或同等仪器；
测试频率 100kHz
- ② 直流电阻测试采用 Keithley 580 毫欧表或同等仪器；
环境温度 25°C
- ③ SRF 使用 Agilent 4395A 网络分析仪和 Agilent 16193A 测试夹具测量。
- ④ 直流电流在 25°C，加载导致指定电感从没有电流的值下降。
- ⑤ 导致指定温度从 25°C 环境温度上升的电流。此信息仅供参考，不代表绝对最大额定值。
- ⑥ 25°C 时的电气规格

Dimensions 结构尺寸

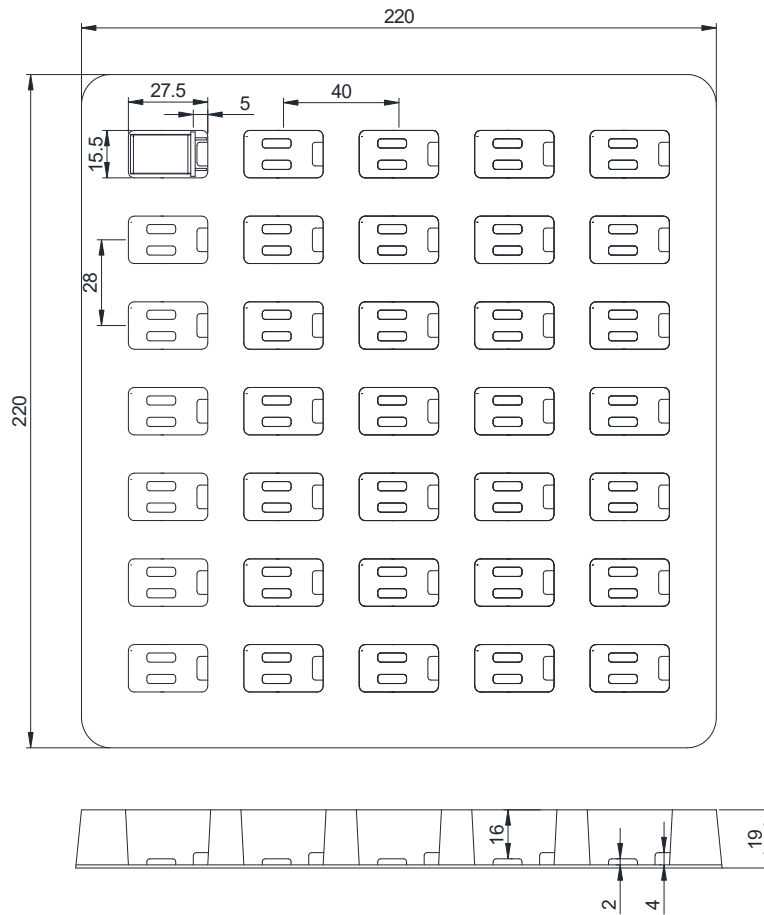


Electrical Characteristic Curve 电气特性曲线



■ Packaging Specification - tray: [mm]

包装规格 - 托盘包装: [mm]



Weight 重量: 14.45~15.25g/PCS
Packaging 包装数量: 35 PCS/盘